

THE COUNTY OF VERMILION RIVER IN THE PROVINCE OF ALBERTA

BYLAW 11-18

A bylaw of the County of Vermilion River in the Province of Alberta to amend Bylaw No. 06-09, being a bylaw to adopt the Grasslands Area Structure Plan, of the County of Vermilion River

WHEREAS the Municipal Government Act, R.S.A. 2000, c. M-26, as amended (“the Act”) allows a Municipal Council to establish and amend its bylaws;

AND WHEREAS the Municipal Government Act, R.S.A. 2000, c. M-26, allows a Municipal Council to adopt an area structure plan.

NOW THEREFORE the Council of the County of Vermilion River, duly assembled, hereby enacts as follows:

That Bylaw No. 06-09, being a bylaw to adopt the Grasslands Area Structure Plan, is hereby amended as follows:

a) Schedule A, the Grasslands Area Structure Plan, is hereby amended as follows:

i. **Section 4.1 Country Residential Subdivision**

1. In Paragraph 2 strike the number “55” and insert the number “59”.
2. Delete Table 4.1a – Density of Dwelling Units in its entirety and replace with the following table:

Table 4.1a – Density of Dwelling Units

Proposed Dwelling Units	Total Hectares of Plan Area	Total Acres of Plan Area	Units per Gross Hectare	Units per Gross Acre
59	64.33	158.97	0.92	0.37

3. Delete Table 4.1b – Possible Population Density in its entirety and replace with the following table:

Table 4.1b - Possible Population Density

Possible Persons Per Household	Total Population with 59 Dwelling Units	Total Hectares of Plan Area	Total Acres of Plan Area	Persons per Gross Hectare	Persons per Gross Acre
2	118	64.33	158.97	1.83	0.74
3	177	64.33	158.97	2.75	1.11
4	236	64.33	158.97	3.67	1.48

- ii. **Map 6: Subdivision Layout Plan** is deleted in its entirety and replaced with the attached Schedule ‘A’
- iii. **Map 8: Area Drainage Plan** is deleted in its entirety and replaced with the attached Schedule ‘B’
- iv. **Map 9: Roadway Plan** is deleted in its entirety and replaced with the attached Schedule ‘C’
- v. **Map 10: Development Phasing Plan** is deleted in its entirety and replaced with the attached Schedule ‘D’

SHOULD any provision of this Bylaw be determined to be invalid, then such provisions shall be severed and the remaining bylaw shall be maintained.

THIS Bylaw shall come into force and effect upon receiving third and final reading and having been signed by the Reeve and Chief Administrative Officer.

Read a first time this 28 day of June, 2011


Advertised the 13 day of July, 2011 AND the 20 day of July, 2011 in the Meridian Booster.

PUBLIC HEARING held the 26 day of July, 2011 at 6:30 p.m.

Read a second time this 23 day of August, 2011

Read a third time and finally passed, this 23 day of August, 2011

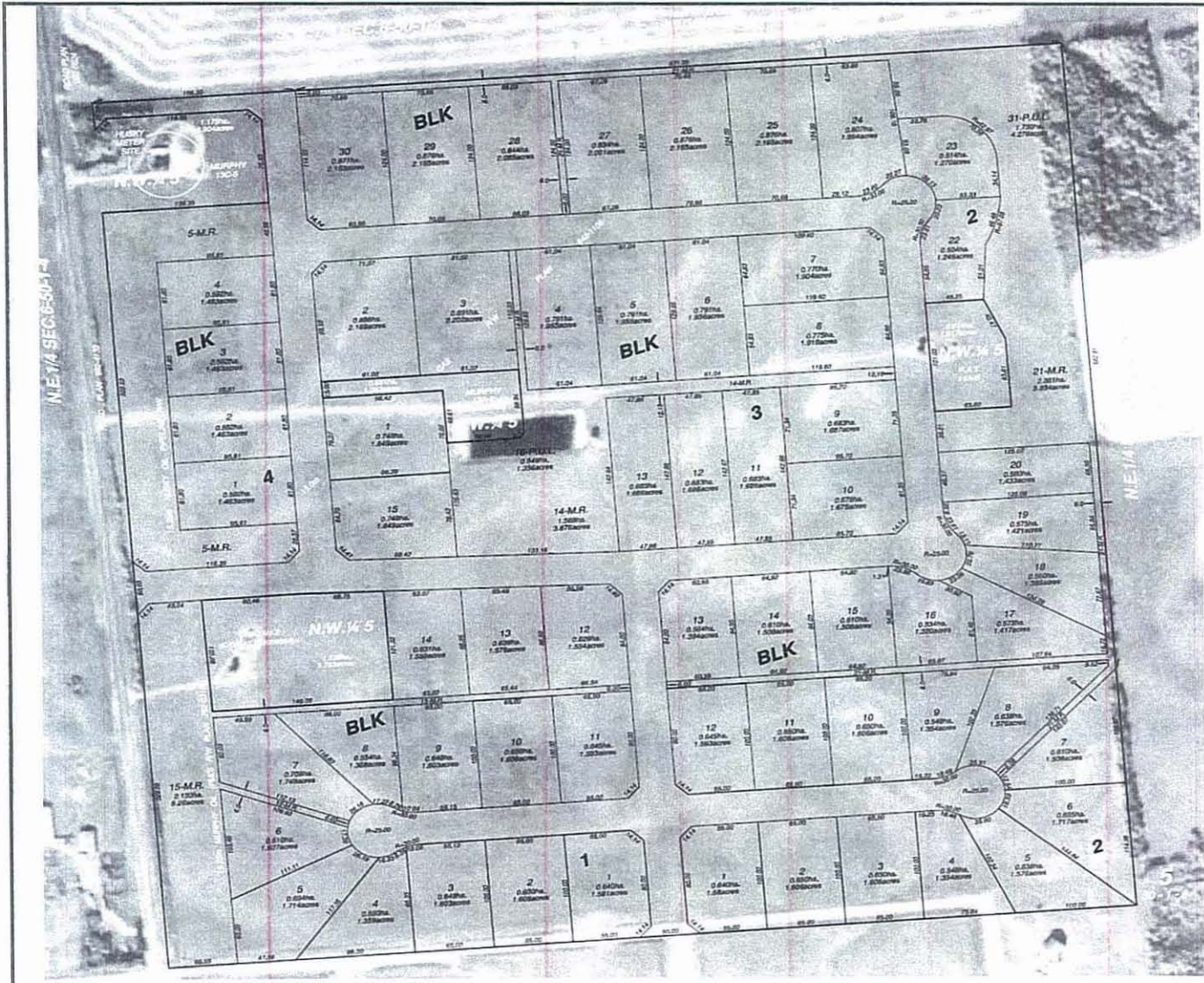
SIGNED by the Reeve and Chief Administrative Officer this 23 day of August, 2011



Reeve



Chief Administrative Office



Grasslands Area Structure Plan
Amendment: JUNE 2011

Note: ALL LOTS TO BE ZONED CR1
(COUNTY RESIDENTIAL ONE DISTRICT)



Bylaw No. 11-18 Schedule A

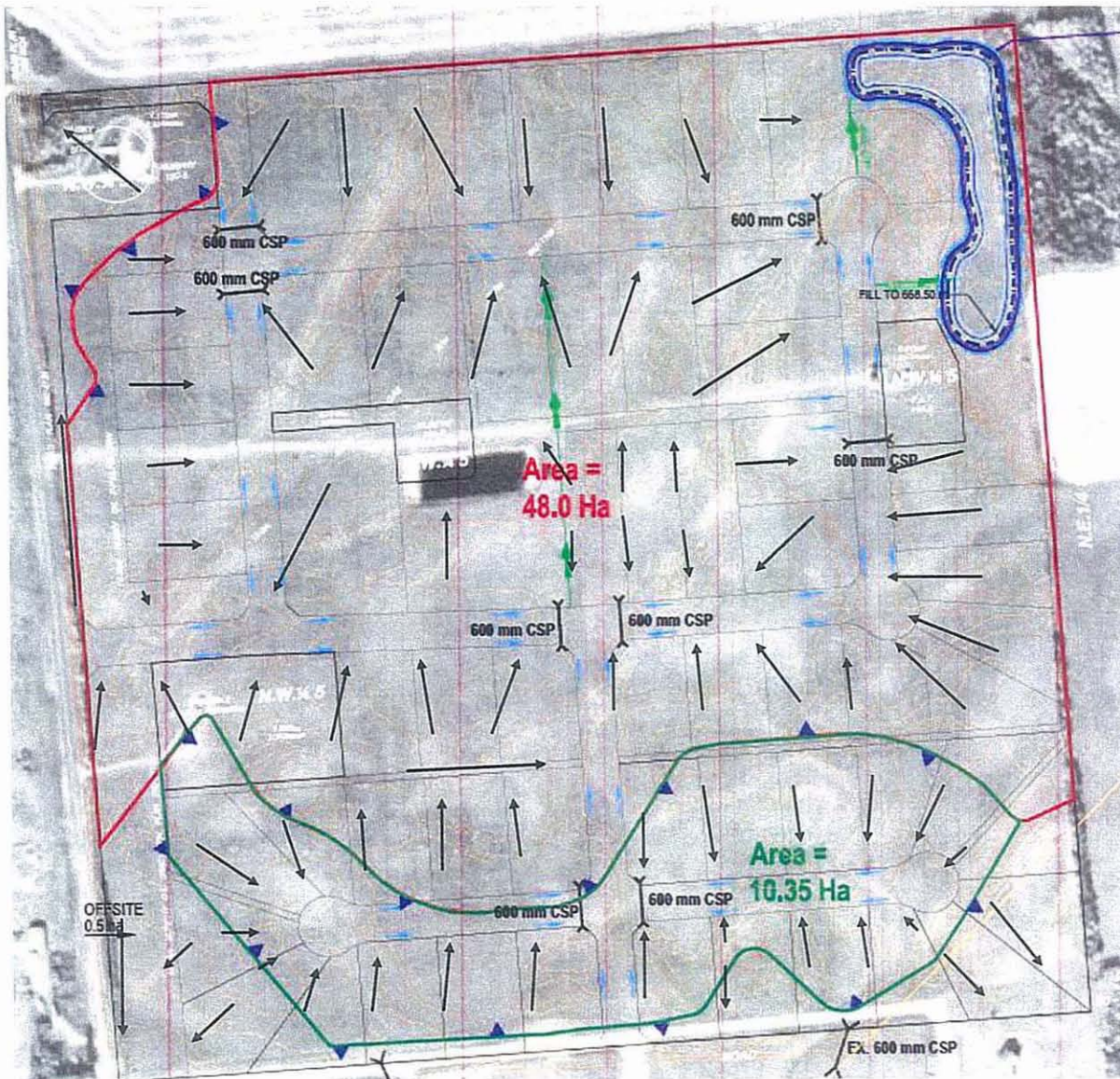
SCALE: NTS

Map 6: Subdivision Layout Plan
(Amended June 2011)



1500 Baker Centre, 10025-106 Street NW,
Edmonton, Alberta, T5J 1G3
Ph: 780-482-2557, Fax: 780-482-2538

Grasslands Area Structure Plan
Amendment: JUNE 2011



LEGEND:

INDEX CONTOURS	
INTERMEDIATE CONTOURS	
MAJOR OVERLAND DRAINAGE	
NORTH DRAINAGE BASIN	
DIVERTED DRAINAGE	
LOCATION BOUNDARY	
CULVERT	
ROADWAY DRAINAGE	
CONSTRUCTED DRAINAGE	
FILL AREA	
LOT DRAINAGE	



SCALE: NTS



Bylaw No. 11-18 Schedule B

Map 8: Area Drainage Plan
(Amended June 2011)



1500 Baker Centre, 10025-106 Street NW.
Edmonton, Alberta, T5J 1G3
Ph: 780-482-2557, Fax: 780-482-2538

Grasslands Area Structure Plan
Amendment: JUNE 2011

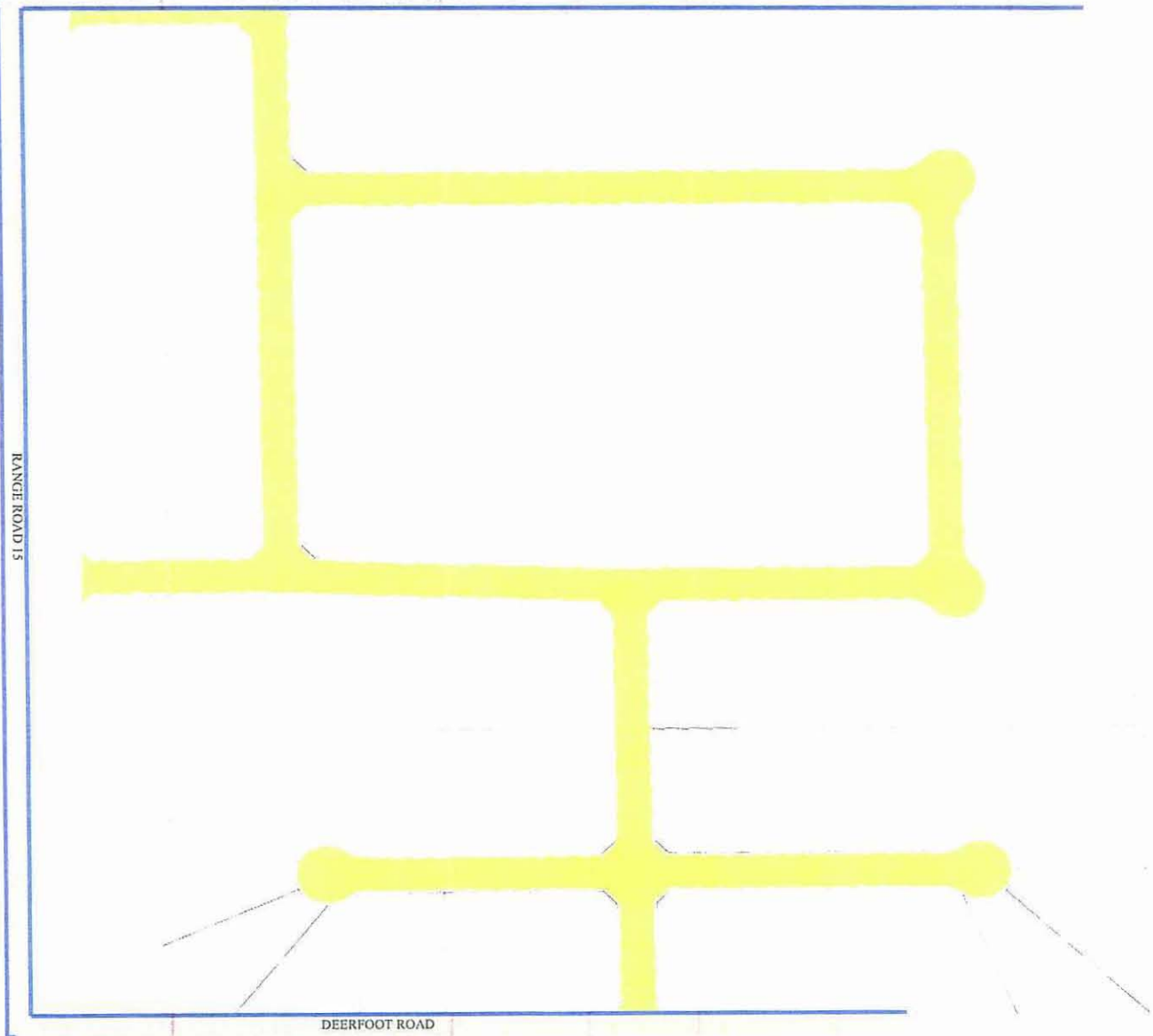
-  PROPOSED INTERIOR ROADWAY
-  EXISTING EXTERIOR ROADWAY
-  FUTURE ARTERIAL ROADWAY
-  5.18m ROAD WIDENING DEDICATION

All proposed interior road right-of-ways are 30m wide.



SCALE: NTS

Bylaw No. 11-18 Schedule C

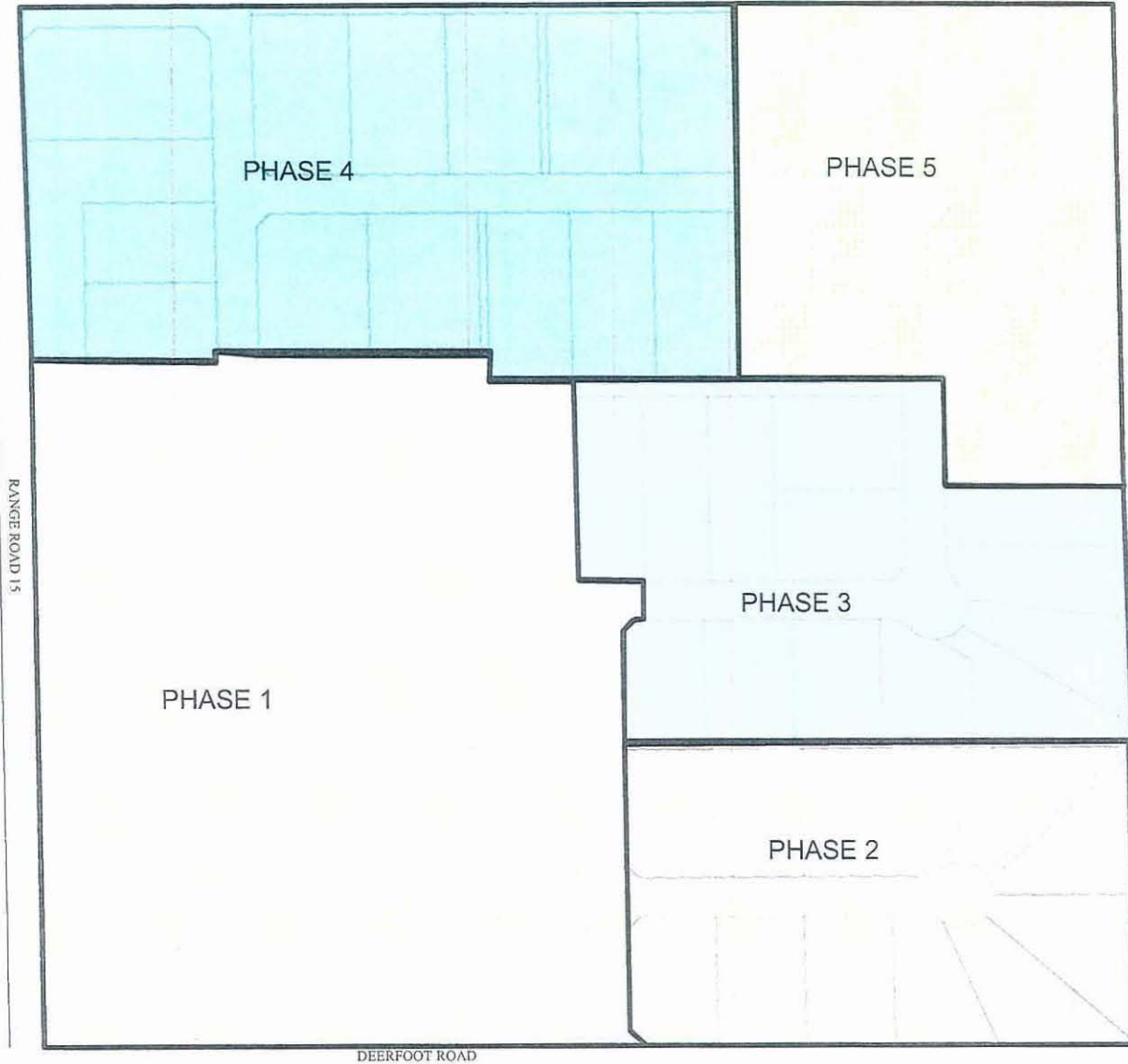


Map 9: Roadway Plan
(amended June 2011)



1500 Baker Centre, 10025-106 Street NW.
Edmonton, Alberta, T5J 1G3
Ph: 780-482-2557, Fax: 780-482-2538

Grasslands Area Structure Plan Amendment:
JUNE 2011



SCALE: NTS

Map 10: Development Phasing
Plan
(Amended June 2011)



1500 Baker Centre, 10025-106 Street NW.
Edmonton, Alberta, T5J 1G3
Ph: 780-482-2557, Fax: 780-482-2538

Bylaw No. 11-18 Schedule D