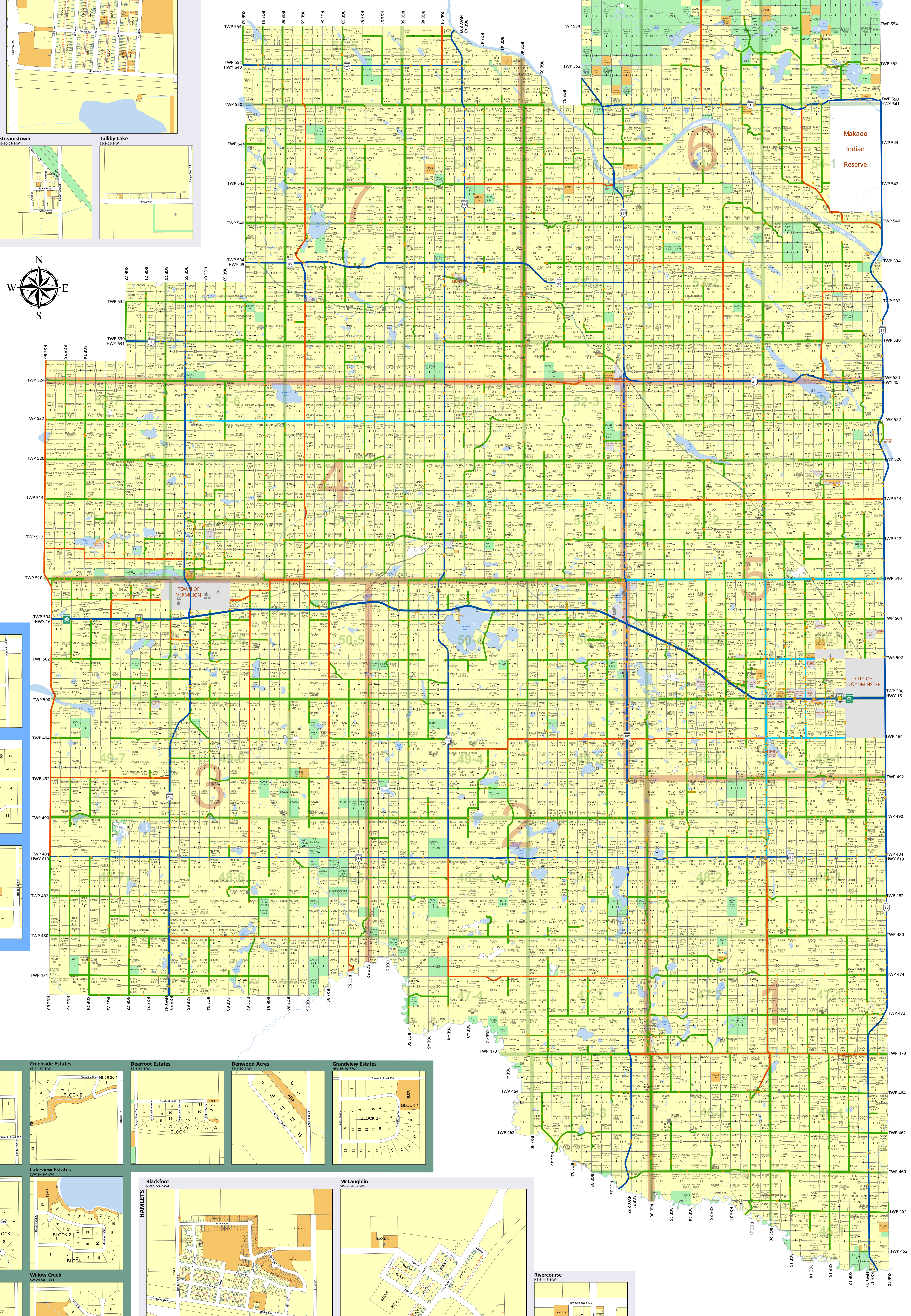
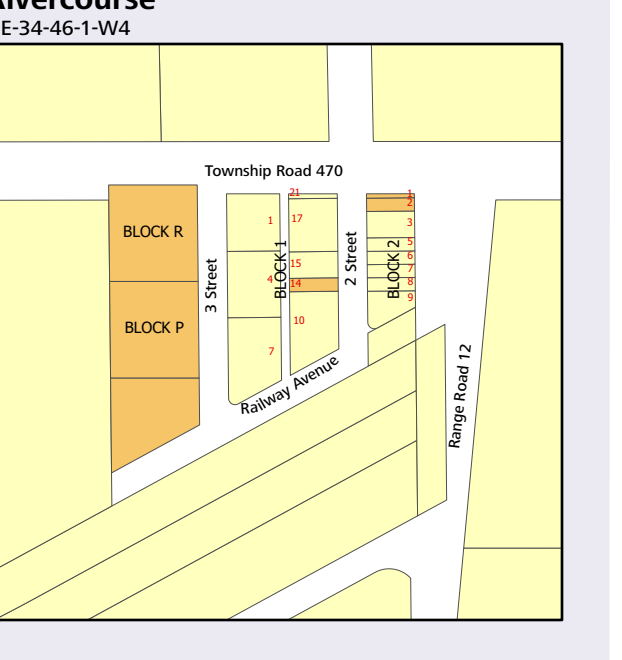
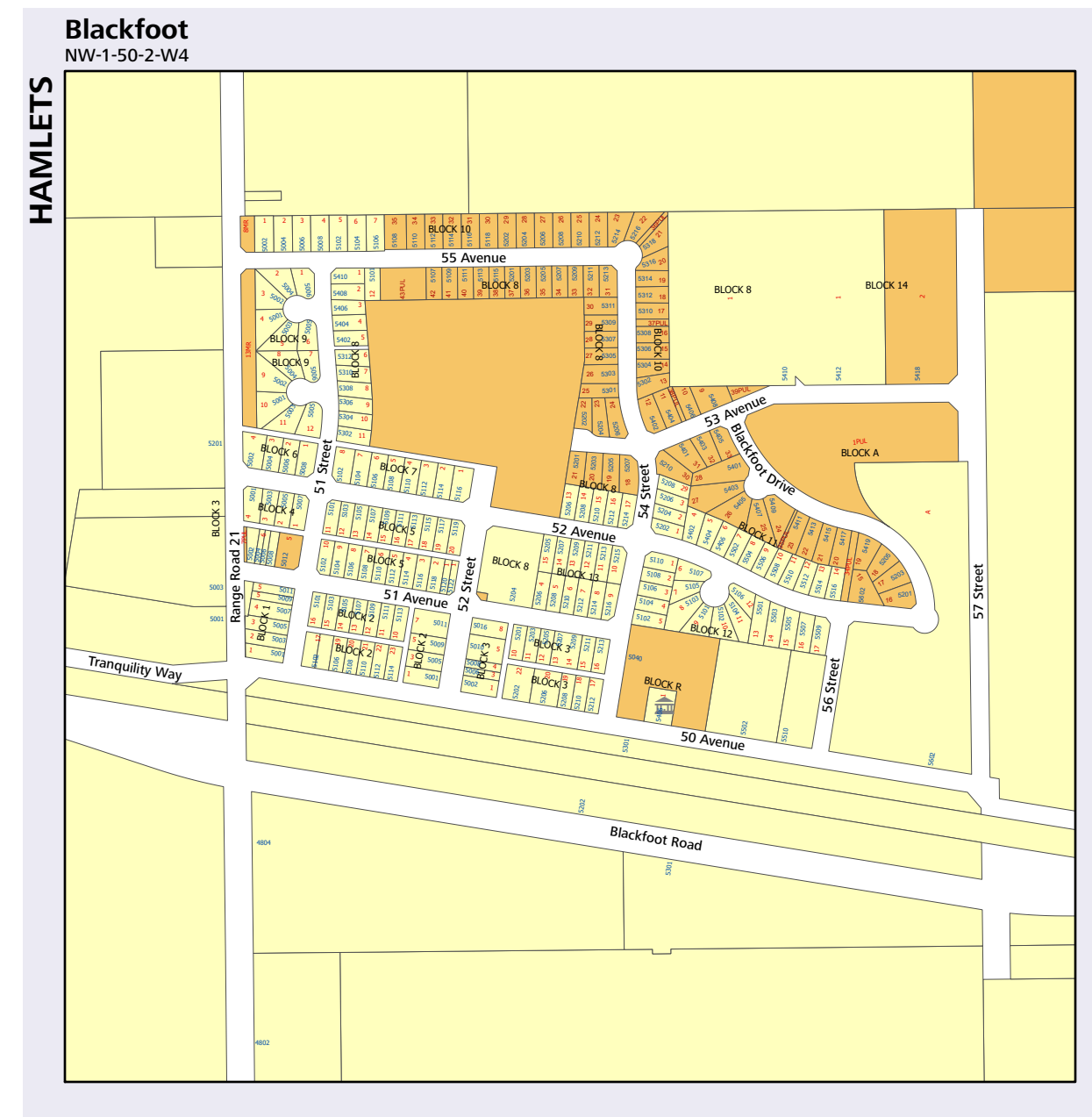
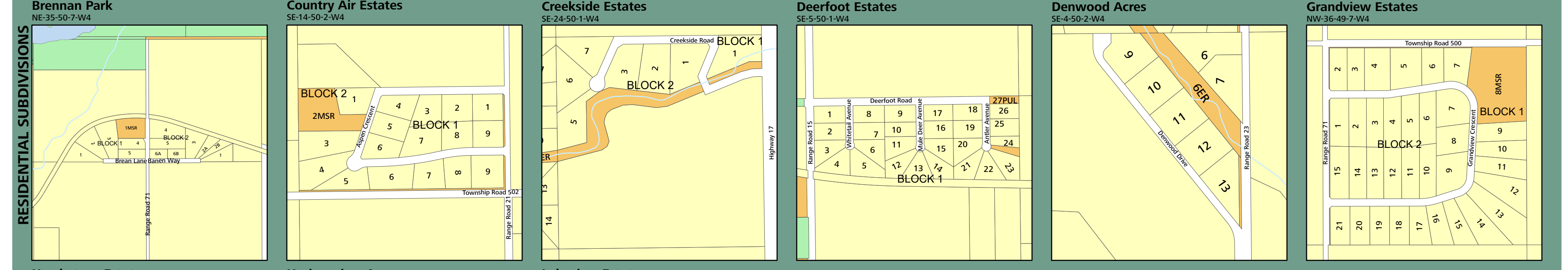
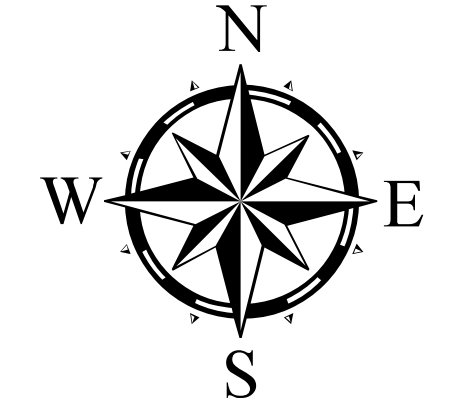
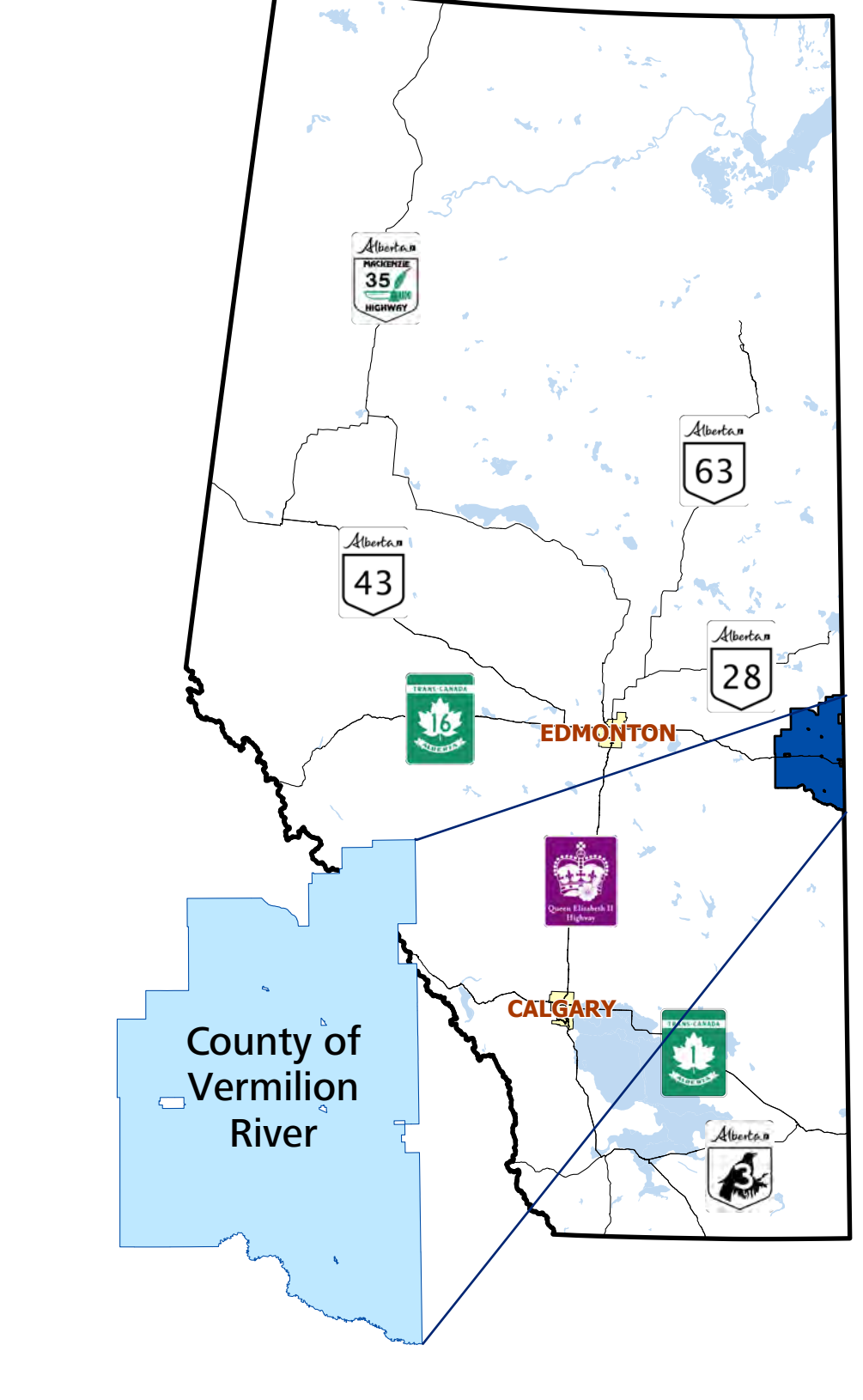
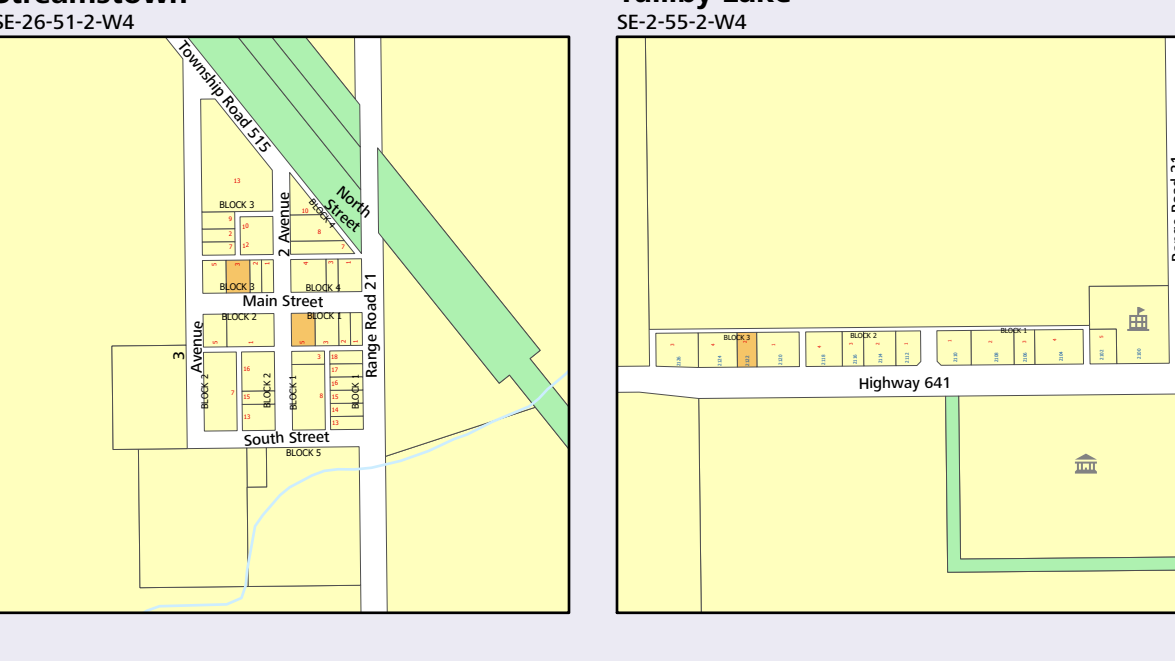
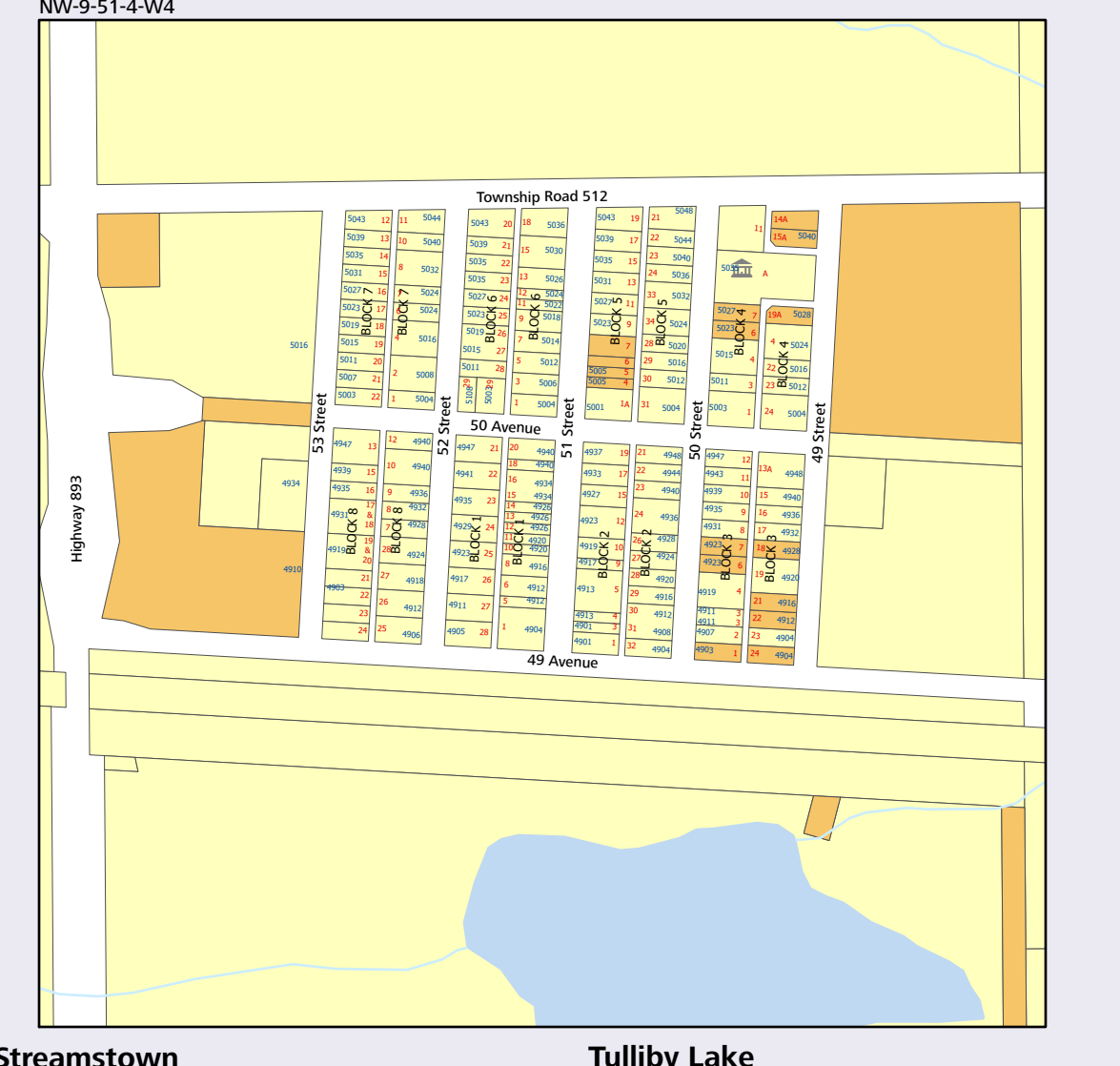
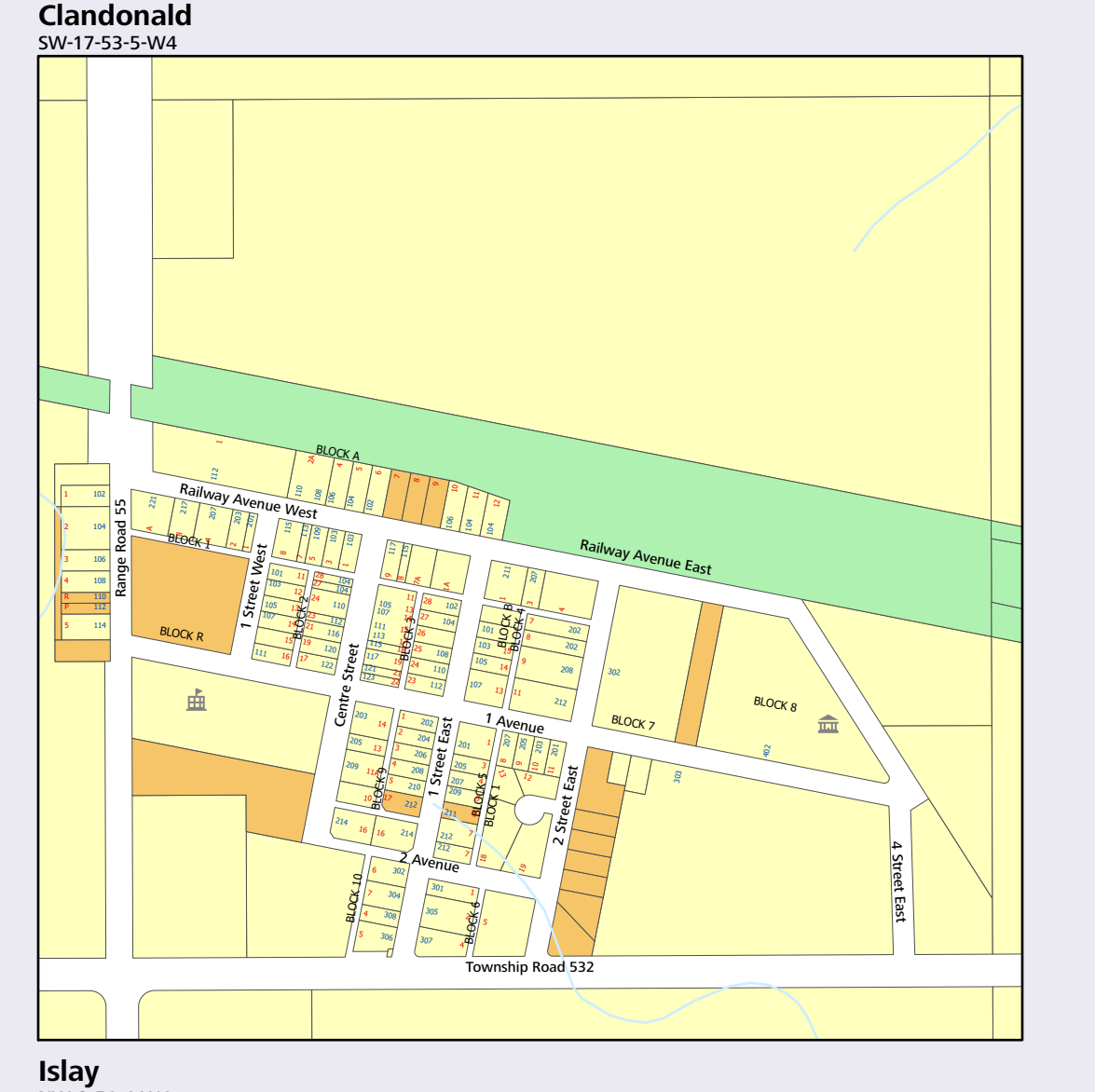
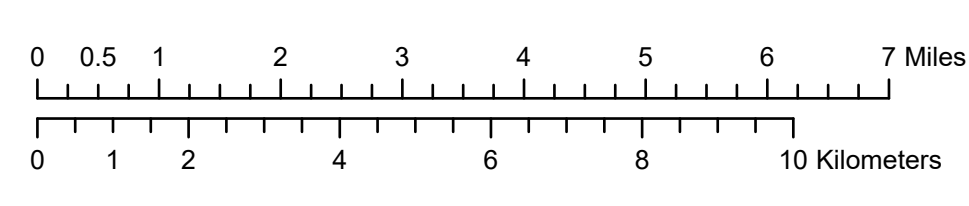


2018 Land Ownership Map

General Office(780) 846-2244
 County Gas Utility(780) 846-2222
 General Office Fax(780) 846-2716
 Vermilion Direct Line(780) 853-5492
 After Hours Emergency(780) 846-2929

Email Addressoffice@county24.com
 Websitewww.vermilion-river.com

- Airport
- Cemetery
- Church
- Community Hall
- Recreation
- School
- Waste Management
- Residence Access
- Collector Road
- Upgraded Local Road
- Local Road
- Provincial Highway
- Township Boundary
- Division Boundary
- Private Land
- Municipal Land
- Crown Land



Compiled from Urban Cadastral Digital Base, Rural Cadastral Digital Base, Urban Titles Digital Base, and Rural Titles Digital Base provided by Spatial Data Warehouse Ltd. via AltaLIS.

The County of Vermilion River has used its best efforts to produce this map free of errors. Utilization of this map shall be at the sole risk of the user. The County of Vermilion River assumes no liability or responsibility for reliance placed thereon.