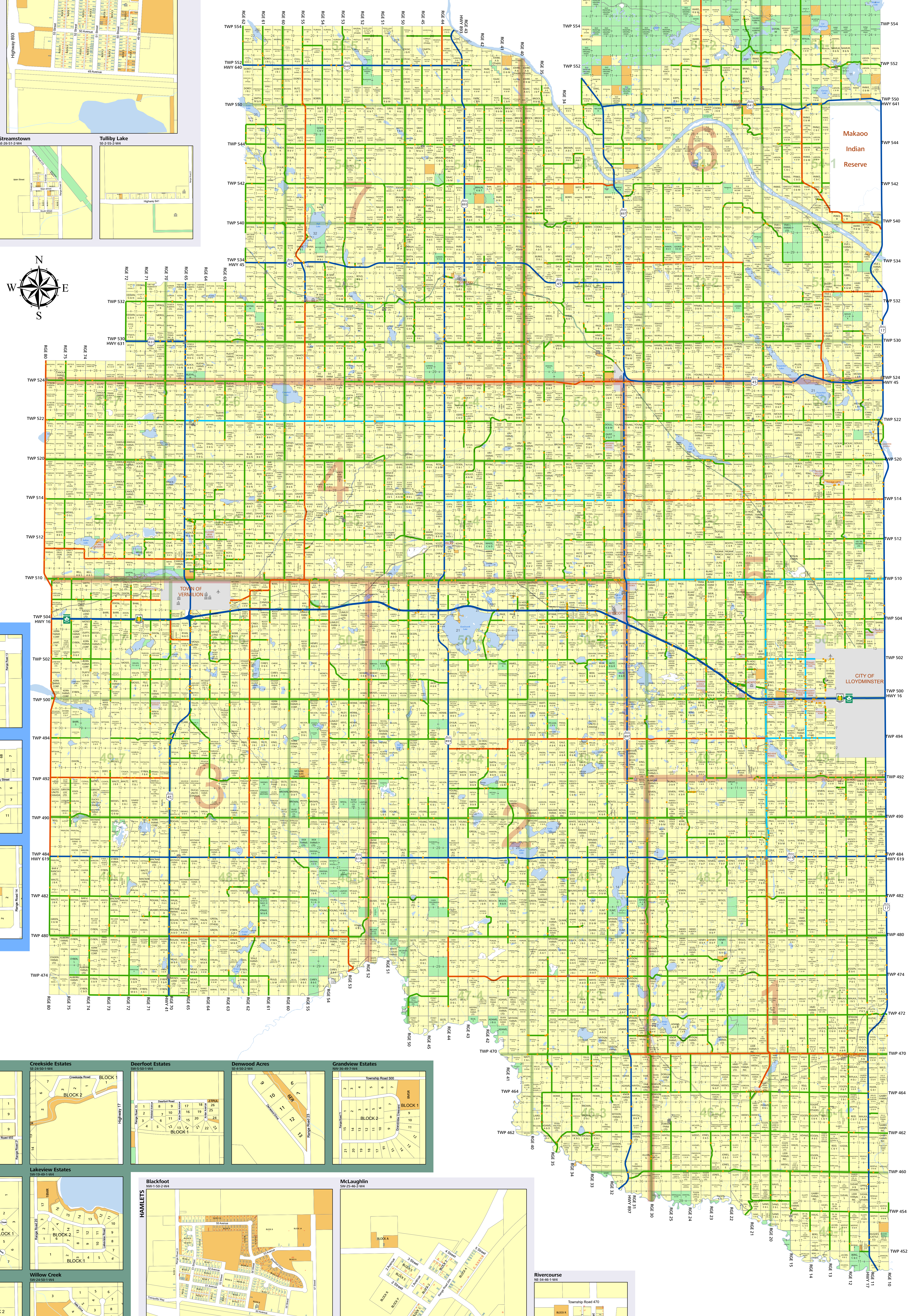
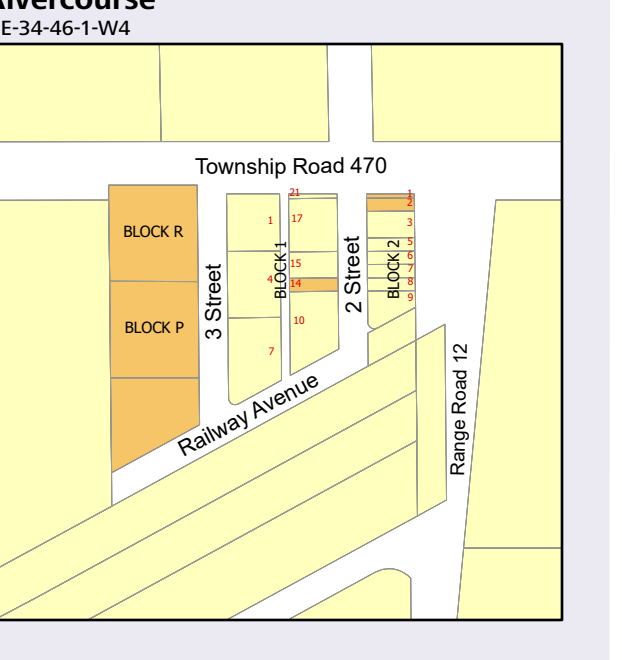
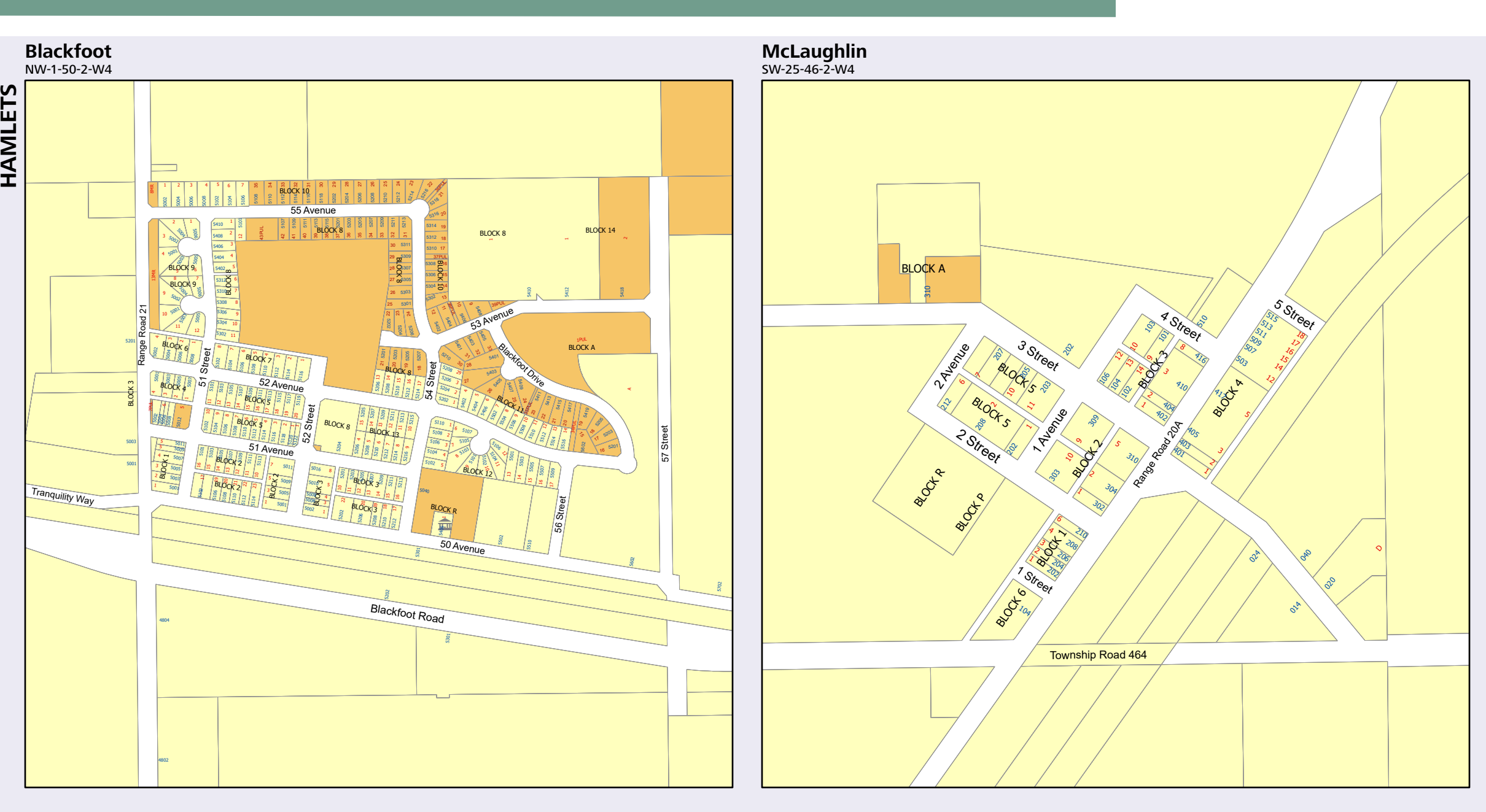
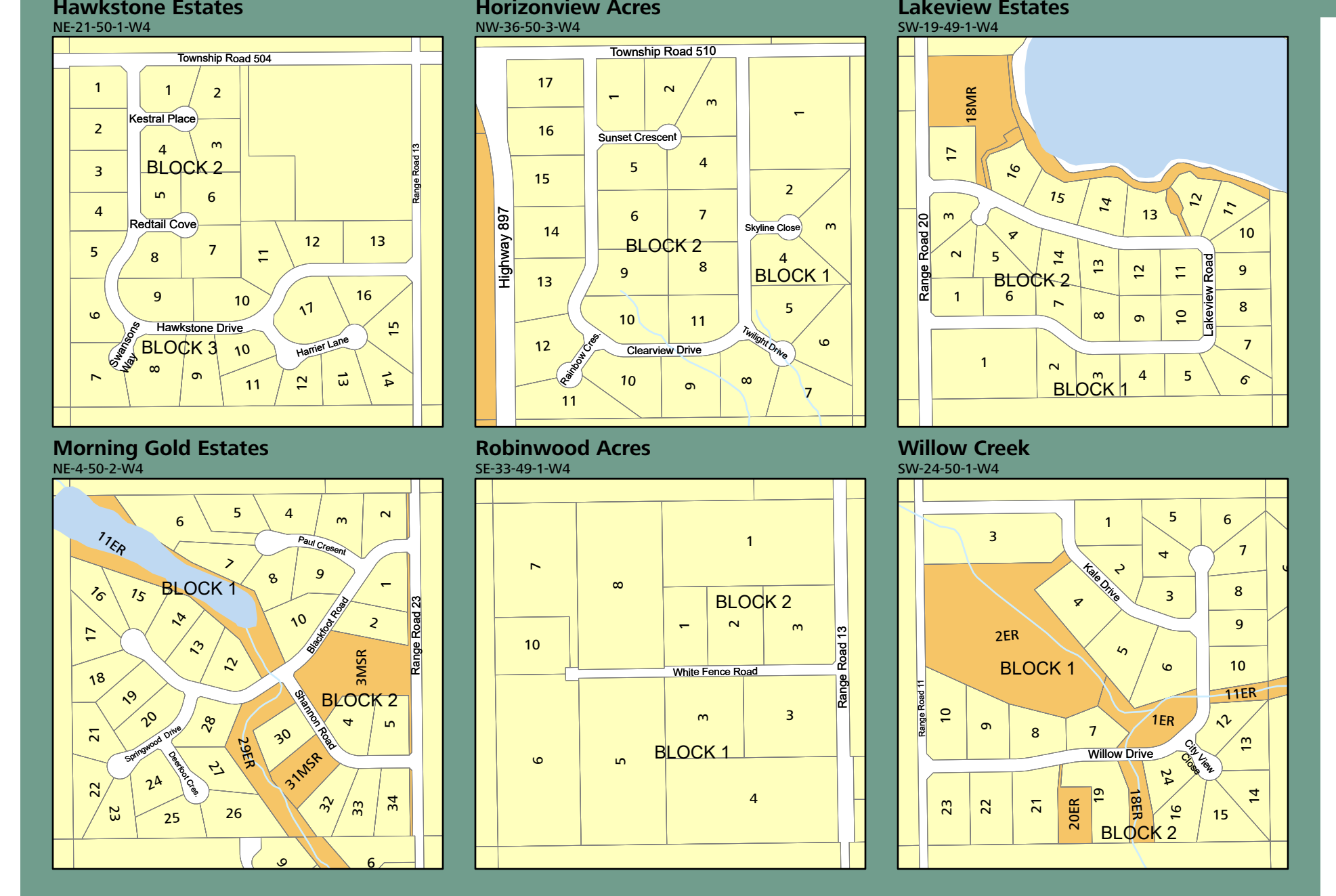
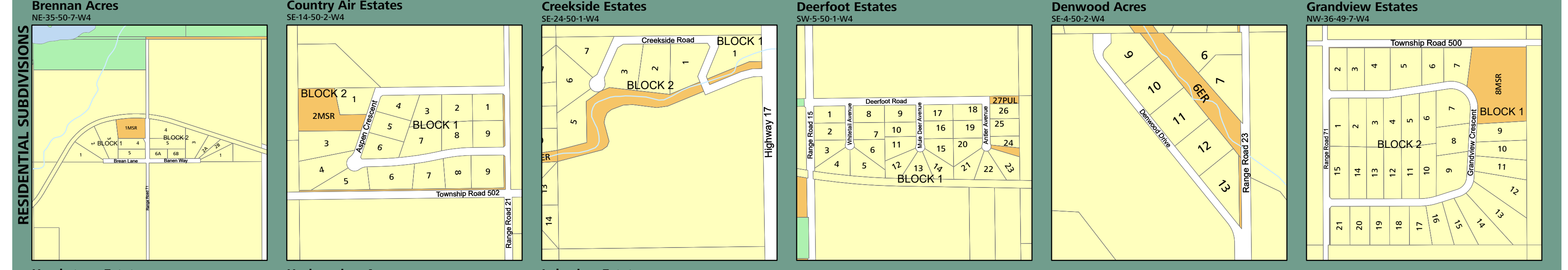
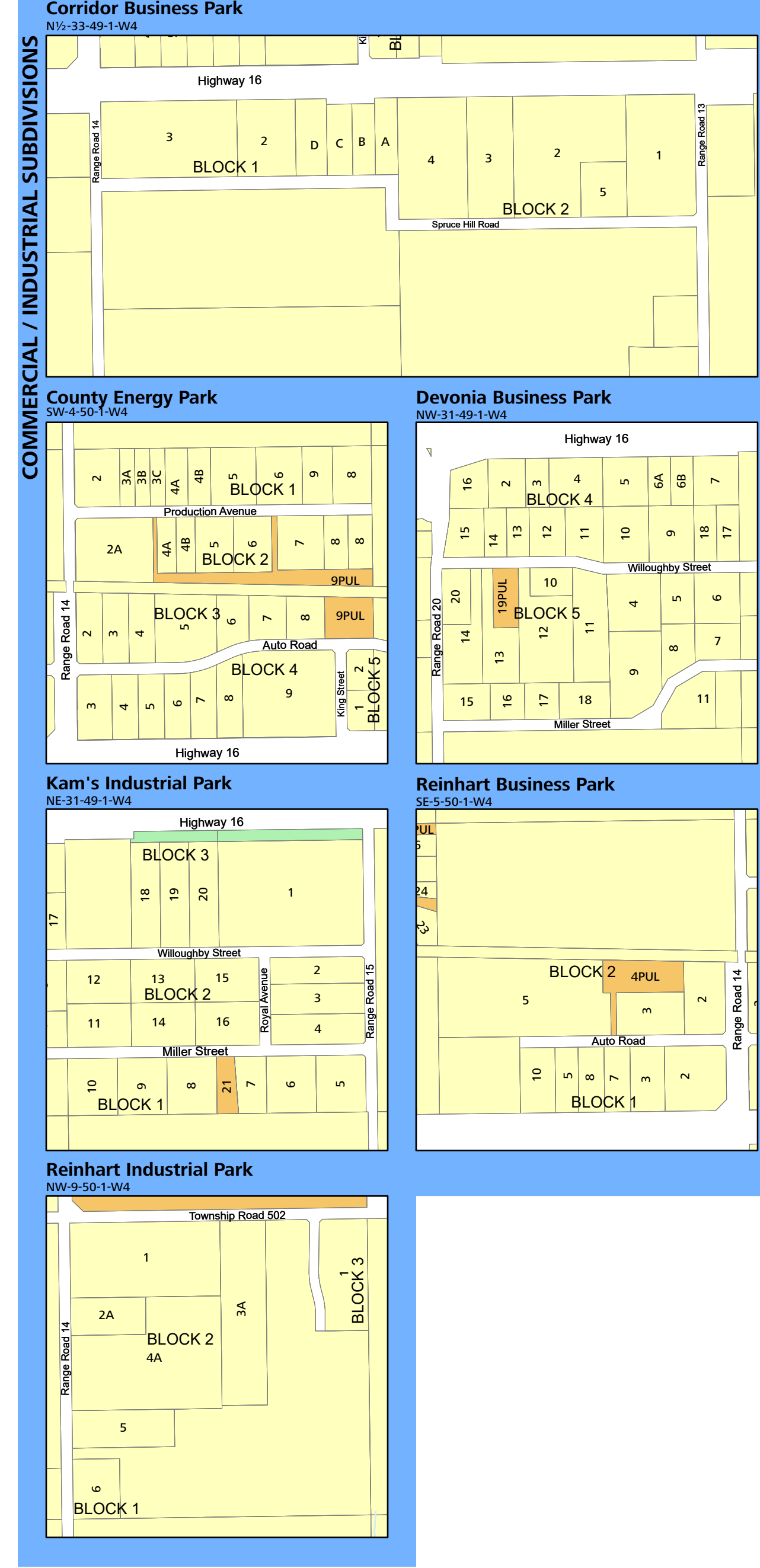
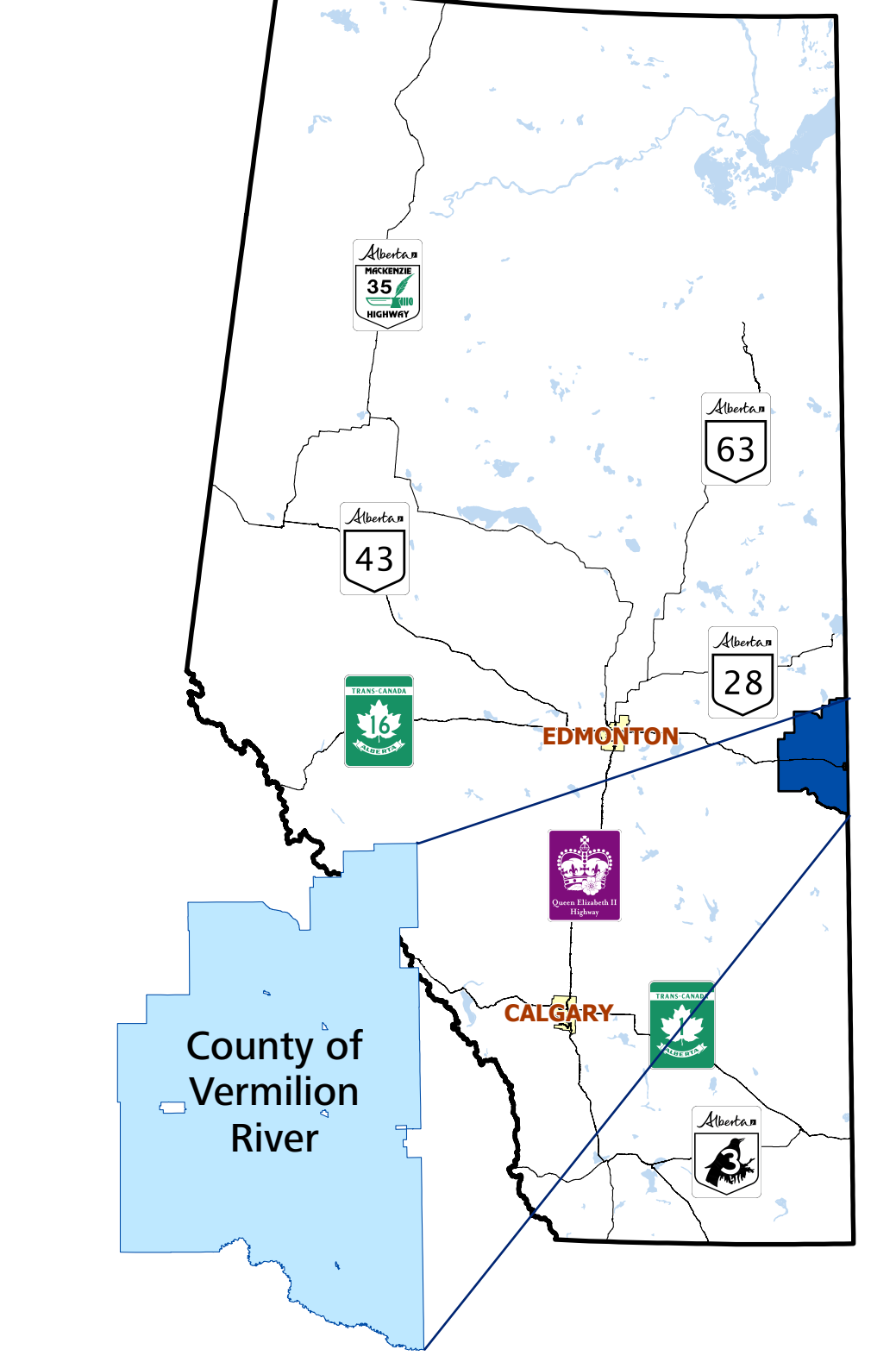
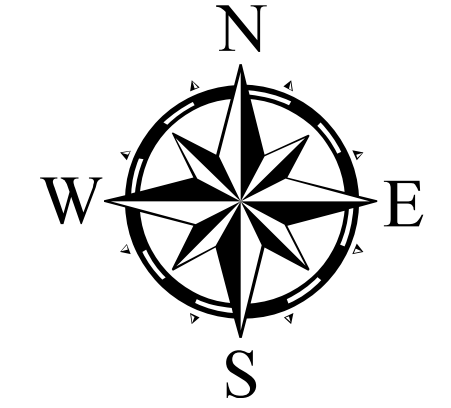
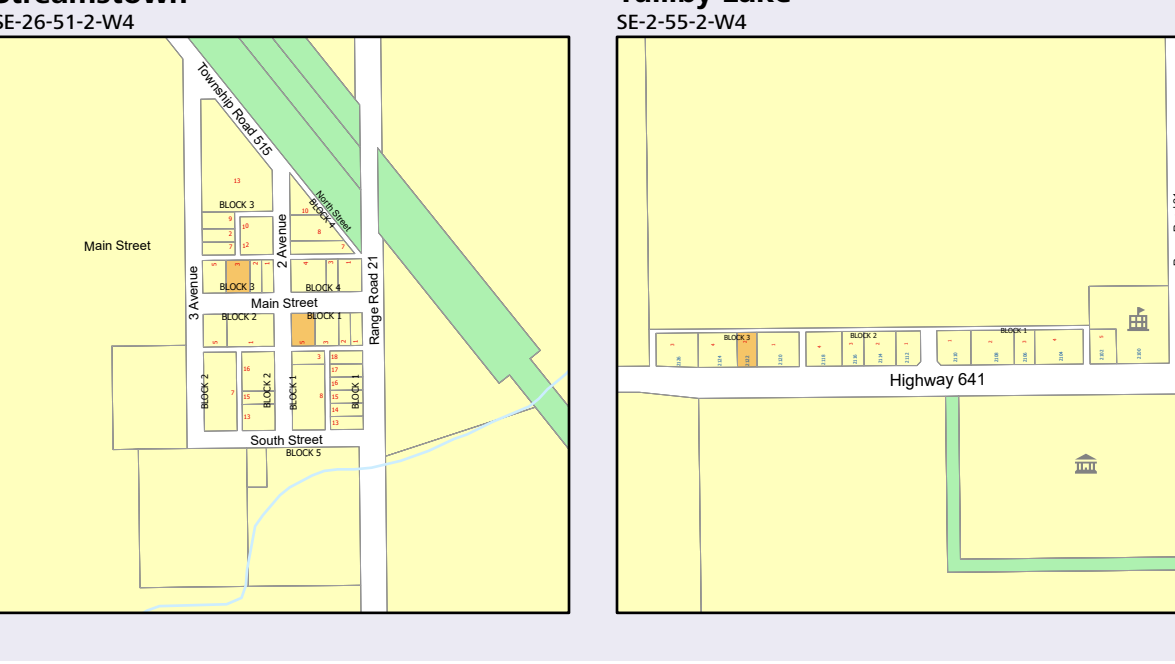
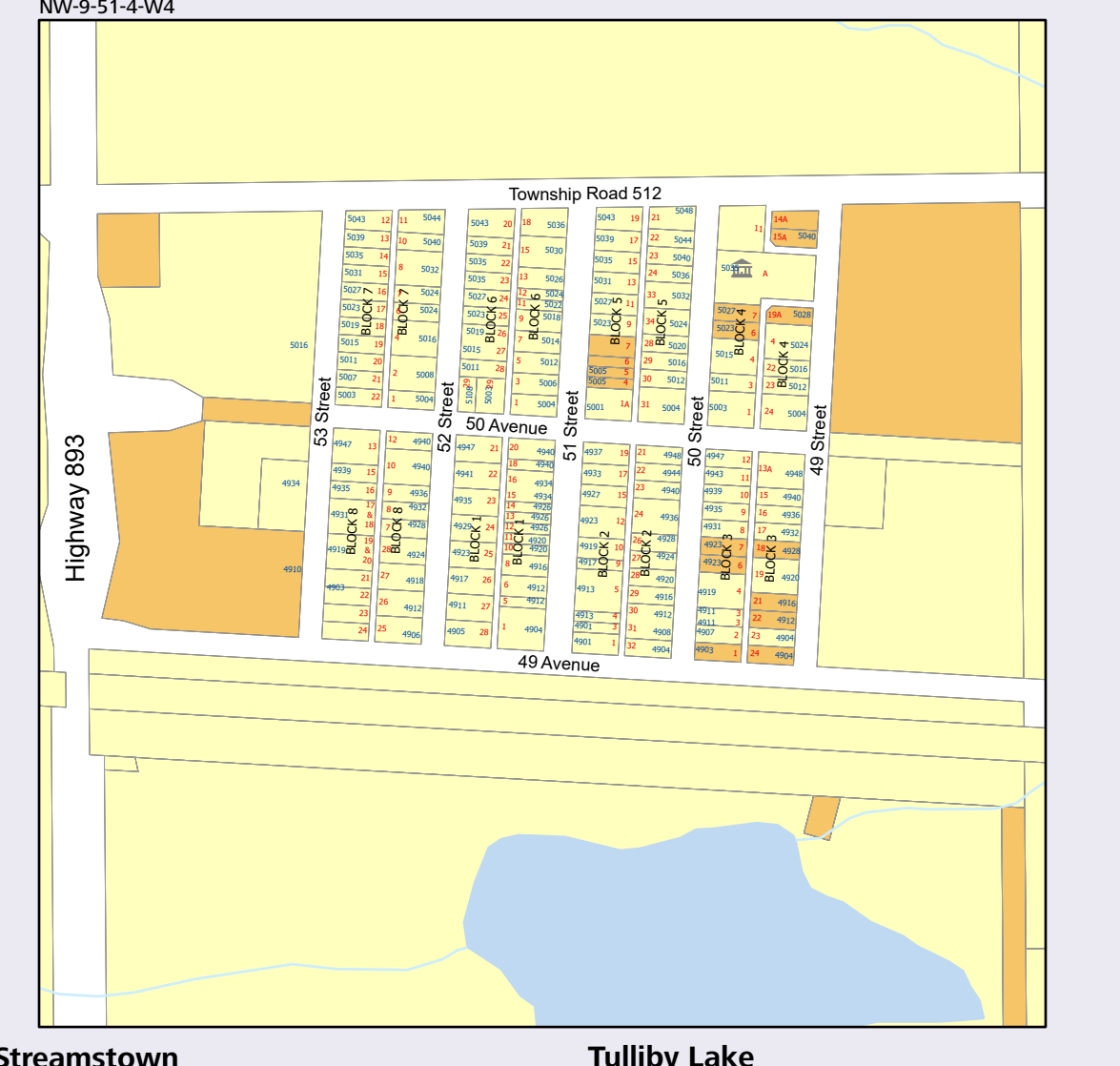
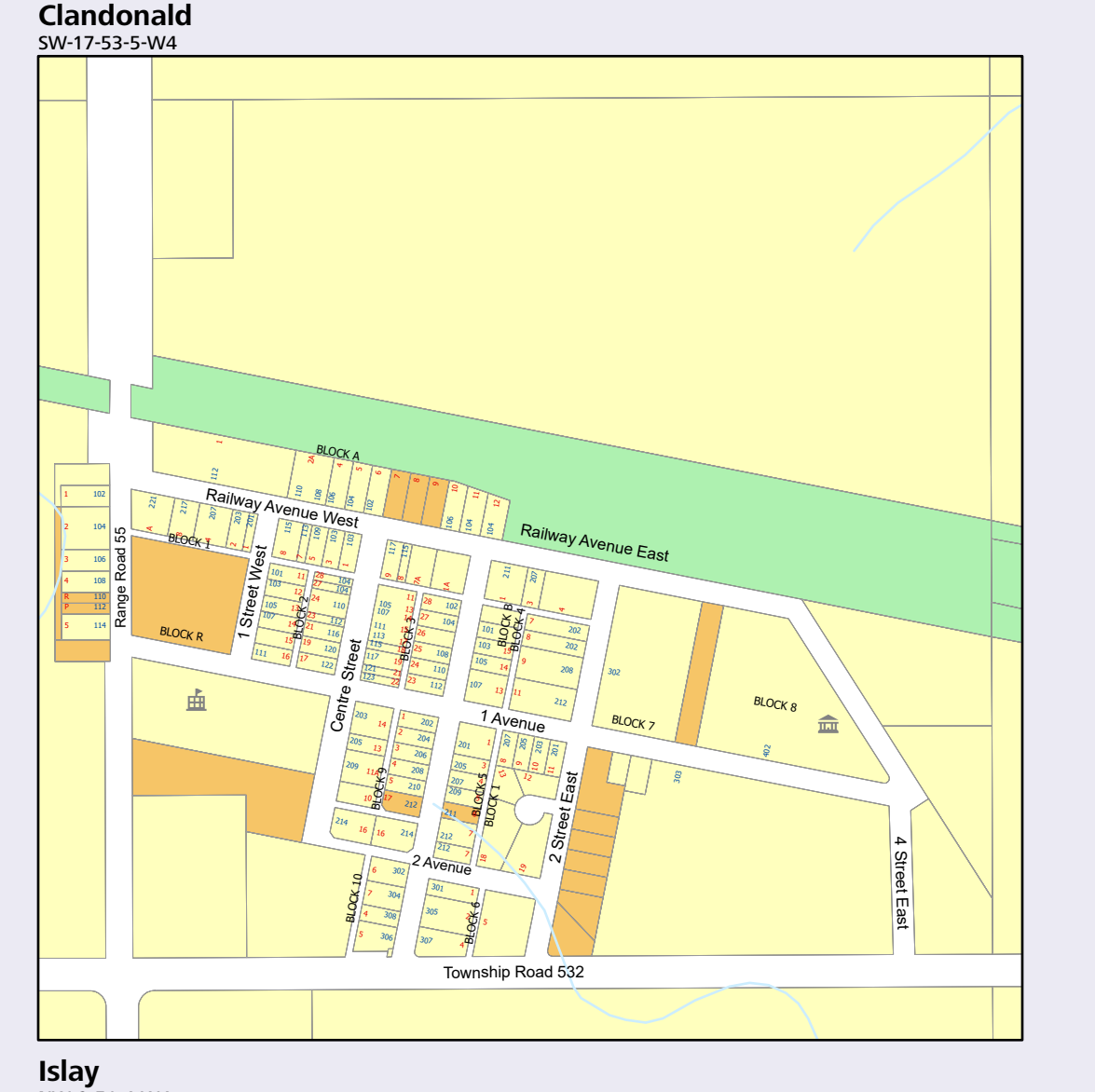
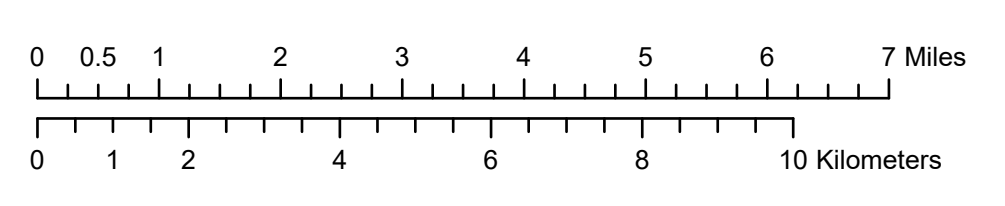


# 2023 Land Ownership Map

General Office .....(780) 846-2244  
 County Gas Utility .....(780) 846-2222  
 General Office Fax .....(780) 846-2716  
 Vermilion Direct Line .....(780) 853-5492  
 After Hours Emergency .....(780) 846-2929

Email Address .....office@county24.com  
 Website .....www.vermilion-river.com

- Airport
- Cemetery
- Church
- Community Hall
- Recreation
- School
- Waste Management
- Residence Access
- Collector Road
- Upgraded Local Road
- Local Road
- Provincial Highway
- Township Boundary
- Division Boundary
- Private Land
- Municipal Land
- Crown Land



Compiled from Urban Cadastral Digital Base, Rural Cadastral Digital Base, Urban Titles Digital Base, and Rural Titles Digital Base provided by Spatial Data Warehouse Ltd. via AltALIS.

The County of Vermilion River has used its best efforts to produce this map free of errors. Utilization of this map shall be at the sole risk of the user. The County of Vermilion River assumes no liability or responsibility for reliance placed thereon.