

County of VERMILION River

Summer Newsletter

Planning & Development	2
Gas Utility	3-4
Public Works	5
V.R.R.A	6
F.C.S.S	6
Agriculture Service Board	7-8
Miscellaneous Information	9
Protective Services	10
Transfer Station Hours	10
County Contacts	10

LIQUID STRYCHNINE UPDATE

The County's Ag. Service Board is participating in the 2009 Alberta 2% Liquid Strychnine Concentrate distribution program. This program will enable farmers to pick up bottles of concentrate to be mixed with their own oats or wheat at a price of \$7.00/bottle.

People purchasing product will need to provide the legal land location where baiting will take place and the acreage of the crops grown on the farm being treated. Protective safety equipment which must be worn or available during application are gloves, eye protection, dust mask and water bottle for washing skin or eye protection if contact with the strychnine occurs.

Bait should be placed down the tunnels and the holes should be covered after baiting. Field audits will be made to verify that safety and application procedures are being followed.

Available at the office in Kitscoty Tuesdays and Fridays from 9:00am—4:00pm until July 31, 2009

ADMINISTRATION / TAXES

DUE DATE FOR PAYMENT OF TAXES IS SEPTEMBER 30, 2009

Please ensure mail is post marked by the post office and online payments are processed by September 30.

The deadline and the Penalty of 12% are **FIRM**

2009 TAX INFO – MILLRATES

	MUNICIPAL		SCHOOL-PUBLIC/SEPARATE	
	<u>2008</u>	<u>2009</u>	<u>2008</u>	<u>2009</u>
Residential-General	2.3000	1.9120	2.8285	2.3690
Residential-Hamlet (Blackfoot)	2.9737	3.9232	2.8285	2.3690
Residential-Hamlets (Clandonald)	5.8116	6.3502	2.8285	2.3690
Residential-Hamlets (Islay)	5.3116	5.3502	2.8285	2.3690
Residential-Hamlets (McLaughlin)	4.8116	4.8505	2.8285	2.3690
Residential-Hamlets (Rivercourse)	4.8116	6.3502	2.8285	2.3690
Residential-Hamlets (Streamstown)	5.3116	5.3502	2.8285	2.3690
Residential-Hamlets (Tulliby Lake)	4.8116	4.8502	2.8285	2.3690
Farmland	8.4000	8.9134	2.8285	2.3690
Non Res.	10.5000	10.3287	4.0174	3.6046
General Rec.	0.0957	0.0858		
Vermilion Rec. Area	0.4814	0.4927		
Other (Average)	0.1125	0.2604		

Please note:

In 2009, Ambulance & Non Collect have been rolled up with the General Municipal

PAYMENTS

→ Can be made by Cash, Cheque, Debit Card, Telephone Banking or Internet Banking
For after hours, please use our payment drop off box

MONTHLY BUDGET PLAN

→ All Current Tax and Water Utility Accounts can be set up to have payments automatically withdrawn from your bank account on a monthly basis
→ Taxes monthly payments are based on previous levy and would be one twelfth of the levy.
→ July, August & September would be adjusted to reflect the current levy
Forms are available at the County office

TAX ASSESSMENT-PUBLIC OPEN HOUSE JULY 14TH TO JULY 15TH 2009 AT THE COUNTY OFFICE

The Assessor will be available to discuss your concerns with Market Value Assessment or to review how your assessment was determined for tax purposes.

GOOD NEWS FOR SENIORS FROM THE PROVINCE:



One education property tax rebate per household will be issued based on a senior's principal residence.

For more information—please call Alberta Seniors and Community Supports (Toll Free) 1-800-642-3853

Questions regarding school support can be directed to the representatives listed below:

Public & Undeclared Education Supporters: Education Property Tax Line [Toll free dial 310-0000](tel:310-0000) and [Dial 780-422-7125](tel:780-422-7125)

Separate School Education Supporters: East Central Alberta Catholic Separate School Division No. 16 [780-842-3992](tel:780-842-3992)

PLANNING AND DEVELOPMENT

BLACKFOOT PHASE TWO

LOTS FROM \$60,100 TO \$90,800 PLUS GST

NOW ON SALE
Accepting Offers



Contact Town & Country Realty For More Information at 780-875-5581

PLANNING & DEVELOPMENT QUESTIONNAIRE

In an ongoing effort to improve our customer service in the Planning and Development department we are asking County residents to fill out and return this questionnaire.

In the last year have you applied for any of the following?

- Subdivision
- Development Permit
- Safety Code Permit

How would you rate your experience with Development staff?

- Excellent
- Satisfactory
- Unsatisfactory

How would you rate your experience with Municipal Planning Services?

- Excellent
- Satisfactory
- Unsatisfactory

How would you rate your experience with Superior Safety Codes?

- Excellent
- Satisfactory
- Unsatisfactory

Are there any areas of service that you feel could be improved?



Please return to: Planning & Development Questionnaire
Box 69
Kitscoty, AB T0B 2P0

GAS UTILITY

NATURAL GAS CONTRACT RATES

Rural Services	\$3,500 minimum
Rural Services under 200 feet (Excluding subdivisions)	\$2,500 minimum
Urban Services	\$1,800 minimum
Grain Dryers & Irrigation Services (from 2 - 8,000,000 BTU's)	\$4,500 minimum
Grain Dryers and Irrigation Services (over 8,000,000 BTU's)	Cost established on individual basis
Commercial Services (Non-grantable)	Cost established on individual basis

If the total cost of the gas contract exceeds the existing rates established, you will be required to pay 25% of all additional installation costs. There are extra costs for services installed in frost conditions, with installation at the discretion of the Gas Utility Manager.

The deadline for anyone interested in having new gas services installed this year is August 1. If you have not been into our office and requested a quote, or if you have received a quote, but have not signed a gas contract, please contact our office immediately to advise us of the status of the new service.

Services will be installed on a first-come, first-served basis, so the sooner we have your information and payment, the sooner your new gas service will be installed.

Please book new and secondary services early – do not wait until fall, as we foresee a busy construction year and do not guarantee service after September 15.

EQUAL BILLING/MONTHLY BUDGET PLAN

Spring is here and once again it is time to sign up for Equal Billing, also known as the Monthly Budget Plan. Applications have been sent out with your May billing, to be returned as soon as possible in June.

This plan is a convenient way to pay your natural gas bill in equal monthly amounts, especially for people on fixed incomes and for seniors. The amount you pay is based on your 2008 gas consumption, calculated at the current gas rate.

Adjustments to this amount will only be made if there is a large variation in the wholesale cost of natural gas.

Monthly meter readings are still required, if you decide to join this plan.

POLICY ON METER READINGS

After one estimate indicating that no meter reading has been received in the past month, Gas Utility staff will phone and/or leave a message requesting you read your gas meter by a certain date.

If you do not call back with a reading, or if we are unable to reach you by that date (make sure we have your correct phone number), Gas Utility staff will be sent out to read your meter.

As productivity is reduced when employees are removed from their scheduled work to obtain meter reads, a \$25.00 charge will be processed for this service.

GAS UTILITY

LEAK DETECTION

In an ongoing effort to balance wholesale purchases to retail sales, the County will be continuing with Natural Gas Leak Detection in scheduled areas.

Meter sets, regulator stations and pipelines will be inspected for abnormalities and leaks. When working in your fields this spring, please advise us of any circular patches of dead vegetation, as this could mean you have a gas leak, possibly caused by a gopher chew.

If you smell mercaptan (or skunk as it is sometimes called) while walking or driving down County roads, please advise us, as this could mean a gas leak where our pipeline crosses a road, or a regulator station that is venting.

Your cooperation by reporting such incidents and by sending in monthly meter reads as close to month end as possible, aids us in balancing the system, helps to minimize gas loss and keeps gas rates reasonable and operational costs down..

CALL BEFORE YOU DIG!!

If you plan to disturb the ground, as part of your planning process, find out where the buried facilities, that are owned by the utilities, are located on your property. Contact Alberta One-Call at least 2 full working days before you plan to start.

When phoning, please have the following information ready:

- Your name
- Address
- Daytime phone number
- Type of work you will be doing
- Approximate depth of the ground disturbance
- Type of property (public or private)
- Date you need locates done by

Alberta One-Call will provide you with a "Ticket Number," which you should keep for future reference and a list of Alberta One-Call's members that will be notified on your behalf. There is no charge to you for this service.

CALL BEFORE YOU DIG to find out where the buried facilities are and Dig Safely to protect yourself and the buried facilities.

It could save you money in the long run. It could even save your life.




CALL BEFORE YOU DIG!
Call Toll-Free 1-800-242-3447



PUBLIC WORKS

AIR CRAFT STRIPS AND USE OF ROADS POLICY

<p style="text-align: center;">COUNTY OF VERMILION RIVER POLICY AND OPERATIONS MANUAL</p>	<p>CODE: PW 021</p> <p>TITLE: Aircraft Strips and Use of Roads</p> <p>APPROVED: Motion # 50-08-08</p> <p>AMENDED: Motion #</p>
<p>LEGAL REFERENCE CARS and Alberta Highway Traffic Act and MGA sections 3, 18</p>	
<p>Policy:</p> <p>The County of Vermilion River deems it appropriate to establish parameters for aircraft operators if they are using County roads as an airstrip in order to provide for the safety of other users of this road infrastructure because they recognize:</p> <ul style="list-style-type: none"> • the recreational, and business use of aircraft by ratepayers and commercial operators in the County and • spraying services provide a benefit to the agriculture, forestry and other industries and • that the use of registered or private airstrips may not always be feasible. <p>Background:</p> <ol style="list-style-type: none"> 1. Transport Canada enforces the Canadian Aviation Regulations (CARS) which does not specifically restrict aircraft use of local roads for an airstrip. Excerpt from the CARS regulation is attached for reference. 2. Alberta Highway Traffic Act - attached is the current Regulation with restrictions and how they manage permission to use the provincial numbered highways. Note that the municipal authority must pass a bylaw to close your roads for such an event. If aircraft are interfering with traffic, your policing agency could then lay appropriate charges under the Traffic Act. 3. A municipality can make a bylaw to regulate Aircraft use of the roads as per the MGA 18 delegates the direction, control and management of all roads to the municipality. The concern from the travelling public is usually with safety; the MGA section 3 includes safety as a main purpose of a municipality. Liability lays with a municipality if they do not regulate this usage requiring aircraft to use due diligence <p>Guidelines:</p> <ol style="list-style-type: none"> 1. The County accepts that this policy and guidelines are for non-emergency situations. 2. The aircraft operator is to carefully evaluate all factors so as to not endanger the travelling public on the road but some examples of items to be considered are: <ol style="list-style-type: none"> a. Use a road that provides at least 2000 meters of visibility b. Suitability of the road surface - is relatively flat / smooth c. The time of operation and visibility conditions d. The height of any buildings, brush, towers or power lines etc. 3. Spraying aircraft are encouraged to utilize registered airstrips or other private airstrips if they can obtain permission when ever they are within 5 miles proximately of the land being sprayed - if this distance is exceeded then local roads can be used for operations provided they have: <ol style="list-style-type: none"> a. Two flag persons at both ends of any road/s being used for landing, taxiing or takeoff b. Have personnel who are trained in all appropriate safety procedures c. Contacted residents in an area they are spraying in 	



Reasons To Partner

www.vermillionriverregion.ca

County of Vermilion River * Dewberry * Kitscoty * Lloydminster * Mannville
Marwayne * Paradise Valley * Vermilion * Lakeland College

The nine members of the Vermilion River Regional Alliance (VRRRA) continue to seek new reasons to partner. The alliance currently has three active subcommittees, all working to promote and build the region.

Economic Development Committee (EDC) is exploring grant opportunities. Many federal and provincial grants require communities to partner in grant applications, which provides an excellent opportunity for the VRRRA. The EDC has also just completed advertising to promote tourism and economic development for the Vermilion River Region in 2009. Local residents can watch for the VRRRA *Calendar of Events* in various businesses and at tourist information centres. For more information, visit our website.

Vermilion River Regional Healthy Communities Coalition (VRRHCC) recently announced a \$327, 703 Health Canada Grant that has helped the coalition advance its strategic plan. Its goals include increasing community capacity to reduce youth's alcohol and drug behaviours; establishing two youth advisory councils to be actively involved in decision making on what works with youth and what does not; and increasing the healthy development and well being of children and families through increasing youth Developmental Assets.

Regional Emergency Management Committee's mandate is to provide backup support, as available, in the event of a major disaster where a formal "Local State of Emergency" has been declared by one of the member municipalities. The Directors meet periodically to develop and plan for the level of support each municipality could provide, depending on circumstances, to assist the

PARTNERING GOVERNMENT AGENCIES CONTACT INFORMATION

Alberta Alcohol & Drug Abuse Commission (AADAC)
Wainwright Area Office (780) 842-7619

Family and Community Support Services (FCSS)
Carol Coleman (780) 853-5358

East Central Health (ECH)
Susan McCulley – Health Promotion Facilitator
(780) 842-4077 (toll free 310-000-842-4077)

Family School Liaison (FSL)
Pat Calyniuk
Contact local school office for assistance

"MAKING A DIFFERENCE" IN THE FAMILY AND COMMUNITY SUPPORT SERVICES (FCSS) PROGRAM

The Making a Difference (MAD) Project has been initiated by Alberta Children and Youth Services to measure the benefit of the many FCSS programs, services and projects offered to citizens throughout the province. This project will ensure the Province that FCSS funding is being allocated in the best interests of all Albertans by:

- encouraging voluntarism
- enhancing, strengthening and stabilizing family and community life
- improving the ability of persons to identify and act on their needs
- helping avert family or community social breakdown
- helping prevent the development of a crisis
- providing citizens with information of its planning and operation
- providing for the development of services on clearly identified social needs and effective planning
- encouraging cooperation and coordination

Tim Moorhouse, Director with Alberta Children and Youth Services, wrote recently "There is no question that knowledge of the outcome results of FCSS investments is of huge benefit in guiding program and service development and improvement in demonstrating the value and effectiveness of these resources in our communities."

The County will be implementing the outcomes measurement project in 2009, beginning with developing a Project Logic Model and reviewing our application and reporting forms to accommodate the collection of program outcome information. The program is targeted to be in place for the 2010 FCSS funding year.

A.S.B

ROADSIDE VEGETATION CONTROL—SPRAYING & MOWING

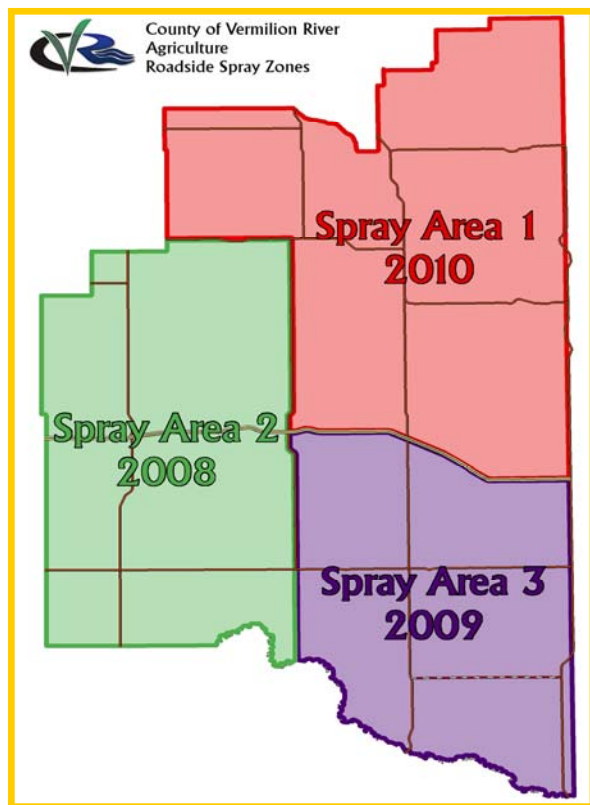
The weed and brush control program begins on June 1st and continues until the first killing frost in September.

As in previous years, we are controlling brush for the purposes of enhancing visibility and improving public safety as well as for protection of the integrity of the road surface.

Weeds are controlled along county roads in accordance with the Weed Control Act and to ensure that weeds are not allowed to establish a presence on the road allowance and then spread onto private land.

Herbicide is applied on an as-needed basis within the road allowance and is used only where weeds and brush are found. Blanket spraying is not done.

Selective application of herbicides will be performed in Spray Area 3 this year. Locations recently brush axed in other spray areas will be treated as well.



NO SPRAY ZONE

The landowner has entered into an agreement with the County of Vermilion River #24 to control brush and noxious weeds along this roadside.

No Spray Zones are available again this year subject to:

- No spray zones that are not maintained will be treated for weeds and brush by the county and the cost of this will be billed to the holder of the agreement
- Available for a one year period only and are not transferable to other people

Mowing of road shoulders is done for weed control and to increase driver visibility as well as public safety. Roadside mowing is scheduled to begin after July 1, 2009.

The County of Vermilion River encourages regular cutting of roadside ditch vegetation for hay, weed control and aesthetics.

For persons wishing to hay ditches:

- Haying privileges along municipal roads are given first to the owner of the land adjacent to the right-of-way and do not extend beyond July 1 unless prior arrangements have been made with the County Ag Field man.
- Prior to cutting hay adjacent to land other than your own, please contact the property owner

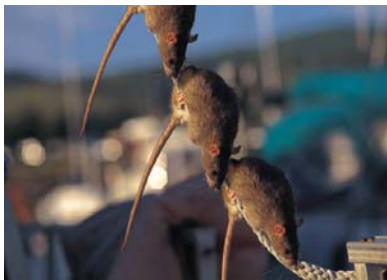
A.S.B

RAT PROGRAM SAVES ONE BILLION DOLLARS

Staff members Roxena Crews and Bill Kloekes form part of the front line in Alberta's war on rats. Together each year they perform more than 3000 checks along the Alberta and Saskatchewan boundary adjacent to the county, inspecting every building, grain bin and bale stack.

It's grueling work but the pay off has been in savings by the Province since the program began in 1951. "Due to the Rat Patrol's vigilance, our province has saved an estimated one billion dollars over 50 years, in property damage, livestock losses, human suffering and healthcare, as well as lost and contaminated food" - source - Alberta Agriculture

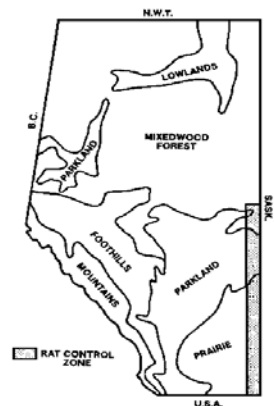
The actual inspections are repetitious and physically demanding. Every possible location that rats could inhabit must be checked in the eighteen-mile-wide corridor which straddles the border.



It's been some time since an infestation has occurred in the county but a flare-up near Sibbald saw staff from the county, several adjoining municipalities and Alberta Agriculture join forces to eradicate the pests.

The price of remaining rat-free is eternal vigilance and for this reason inspections are carried out each year from March until June and again from August to November.

Rat on a RAT
If you see a Norway rat –please
phone the county office at
780- 846-2244



Alberta's Rat Control Zone

CLUBROOT NOW AN AGRICULTURAL PEST



Clubroot, Plasmodiophora brassicae is classified as a protist—an organism having plant, animal and fungal characteristics. The resting spores of clubroot can remain viable in the soil for up to 20 years and are spread by contaminated farm equipment and by wind and water.

Prevention is critical to stop the spread of this disease. Preventive measures that you can take are:

- Use long rotations between canola crops—four years or more
- Practice good sanitation to restrict the movement of potentially contaminated soil
- Use direct seed and other conservation measures to reduce erosion
- Scout canola fields regularly and carefully
- Avoid the use of straw, hay, silage and manure from infested or suspicious areas. Spores may survive through the digestive tracts of livestock
- Avoid common untreated seed including canola, cereals and pulses..

OTHER

DATES MISSED IN COMMUNITY CALENDAR.....

Islay Town and Country Picnic on July 1st from 10 til 2. The cost is \$2 per person



Clandonald Fair, Home Coming, & School Reunion on August 7 8 & 9. For more information visit their web site: clandonaldreunion.ca

REMINDER.....

As of January 1, 2009, the County no longer has an arrangement with the Vermilion Chamber to act as our Contact Office. Ratepayers are asked to communicate directly with the Administration Office in Kitscoty for all of their business / transactions.

PLEASE NOTE.....

Hwy 893 over the North Saskatchewan River, south of Heinsburg will be under construction for a bridge rehabilitation project from June to September 2009.

The construction will last approximately 3 to 4 months. Only one lane of 3.7m wide will be available on the bridge during the construction period.

For additional information, please contact Mr. Brent Herrick at Alberta Transportation Barrhead Office at (780) 674-8221.

THE VERMILION VALLEY LODGE SUPPORTIVE HOUSING accommodates and provides care for seniors, disabled adults and persons with mild to moderate dementia.

This facility is in need of an assist bath tub to serve resident care needs. The Vermilion & District Housing Foundation recognizes the necessity and hopes to initiate this project.

The cost of purchase and installation of the assist bath tub is approximately \$25,000.00.

Donations made to this project would be gratefully received. A tax deductible receipt will be issued for each donation.

Donations can be made to the Vermilion & District Housing Foundation 4610-53 Ave. Vermilion, AB T9X 1G6.

NORTHERN LIGHTS LIBRARIES—HOURS AND PROGRAMS

Three Cities Public Library—Paradise Valley 780-745-2277

Tuesday 9:00am—4:00pm
Wednesday 12:00pm—8:00pm
July 7 to August 15, 2009

Summer Reading Program Available
Magician, Brian Lehr will be here July 15th at 1:00pm

Marwayne Public Library 780-847-3930

Wednesday 1:00pm—7:00pm
Thursday 10:00am—1:00pm
July 16 to August 31, 2009

Vermilion Public Library 780-853-4288

Tuesday 10:00am—7:00pm
Wednesday & Friday 10:00am—5:30pm
Thursday 10:00am—8:00pm
Saturday 10:00am—5:00pm
www.vermilionpubliclibrary.ca

Annual Card Issuance Fees for County of Vermilion River Residents

Junior (age 0-15) \$5.00 Adult (age 16 +) \$15.00 Family \$20

PROTECTIVE SERVICES



FIRE BANS

During a fire ban, there will be absolutely **NO BURNING!**

This includes: burning barrels, smudge, and recreational fires. All fire permits issued are cancelled until further notice.

Burning without a permit, or during a fire ban, could result in a minimum penalty of \$300.00, plus any related costs for extinguishing the fire.

When fires burn out of control in our County, extra demand is placed on staff and our volunteer fire fighters, creating large costs. The County will be aggressively pursuing cost recovery from individuals who light fires during a ban, or burn without a permit.



We would like to express how proud we are of our volunteer fire fighters that have fought fires on behalf of the County.

It is a selfish act when fires are lit during a ban, and the fire fighters are unselfish by sacrificing their lives and families to deal with these self-interested acts.

For example, due to a fire being lit during a fire ban, on Mother's Day when you were home with your families, our fire fighters had to leave their families at home to fight fire.

The extra time, and long hours they put in for the safety of life and property definitely deserves our appreciation.....**THANK YOU VOLUNTEERS!!**

🇨🇦 Please Note that all Transfer Sites will be closed on WEDNESDAY, JULY 1, 2009 🇨🇦

Transfer Station Hours

**VERMILION RIVER REGIONAL
WASTE MANAGEMENT
SERVICES COMMISSION**

Manager: Shirley Schwartz
Phone: (780) 853-5561
Fax: (780) 853-4532
E-mail: vrwmsc@telus.net

<u>Kitscoty:</u> (SE 35-50-3 W4)	Wed: 2:00 p.m.—5:00 p.m. Wed: 2:00.p.m.—7:00 p.m.	Sat: 10:00 a.m.—4:00 p.m. (Nov 1-Apr 30) Sat: 10:00 a.m.—4:00 p.m. (May 1-Oct 31) Thur: 1:00 p.m.—5:00 p.m.
<u>Marwayne:</u> (SE 34-52-3 W4)	Wed: 2:00 p.m.—5:00 p.m. Wed: 2:00 p.m.—7:00.p.m.	Sat: 10:00 a.m.—2:00 p.m. (Nov 1-Apr 30) Sat: 10:00 a.m.—2:00 p.m. (May 1-Oct 31)
<u>Clandonald/Dewberry:</u> (NE 11-53-5 W4)	Thur: 12:00 p.m.—5:00 p.m.	Sat: 10:00 a.m.—2:00 p.m.
<u>Paradise Valley:</u> (NW 7-47-2 W4)	Wed: 10:00 a.m.—12:00 p.m.	Sat: 9:00 a.m. — 2:00 p.m.
<u>Preston:</u> (SW 30-48-6 W4)	Sat: 10:00 a.m. — 2:00 p.m.	
<u>Tully Lake:</u> (NW 6-55-1 W4)	Wed (1st & 3rd) and Sat (2nd & 4th): 10:00 a.m. — 2:00 p.m.	
<u>Vermilion:</u> (SW 5-51-6 W4)	Monday through Saturday (except Stat Hol)	9:00 a.m. — 5:00 p.m.

PLEASE NOTE...



It has come to our attention that needles and sharps are getting into the bins either at our transfer sites or in private bins throughout the region.

This type of waste should NEVER be placed in regular household waste bins, since fines and the possibility of prosecution could occur.

Our 5 main sites (Vermilion, Kitscoty, Marwayne, Clandonald/Dewberry, and PV) have hazardous waste disposal bins where sharps can be disposed of at no charge as long as they are in a closed container (i.e.: coffee tin)

COUNTY ADMINISTRATION OFFICE

Street Address:	4912-50 Ave Kitscoty, AB	Mailing Address:	Box 69 Kitscoty, AB T0B 2P0
Phone:	(780)846-2244	E-mail:	county24@telusplanet.net
Vermilion Line:	(780)853-5492	Website:	www.vermilion-river.com
Fax:	(780)846-2716		